

## Blackpool Victoria Hospital Emergency Department

### Monthly Bulletin: January to December 2011

This bulletin provides a breakdown of all attendances<sup>1</sup> at Blackpool Victoria Hospital Emergency Department (ED) between January 2011 and December 2011.

Between January and December 2011 there were 78,694 attendances to Blackpool Victoria Hospital ED. The month with the highest attendances was October with 6,990 attendances (**Figure 1**). There were more male than female attendances presenting at Blackpool Victoria Hospital ED (males=40,508; 51%).

**Figure 2** illustrates age group of ED attendances for each month. Over three in ten ED attendances were aged over 60 years old (n=25,254; 32%) and 30-59 years old (n=24,245; 31%). Most ED attendances were self-referred (43%) or referred by an emergency call or ambulance (43%) (**Table 1**).

**Table 2** details the injury group of ED attendances. The majority (89%) of attendances were recorded as other (including other injury and medical attendances). Sports injury accounted for 3% of attendances, assaults 3%, overdose and poisoning 2% and road traffic collisions (RTC) 2%.

**Table 3** shows the location of incident for ED attendances. It shows that six in ten (60%) of incidents occurred in the home, and almost a fifth (19%) occurred in a public place.

The discharge destination for ED attendances is displayed in **Table 4**. It indicates that over half (55%) attendances were discharged. Almost three in ten (27%) of attendances were admitted into hospital and 10% were referred.

#### Assault attendances

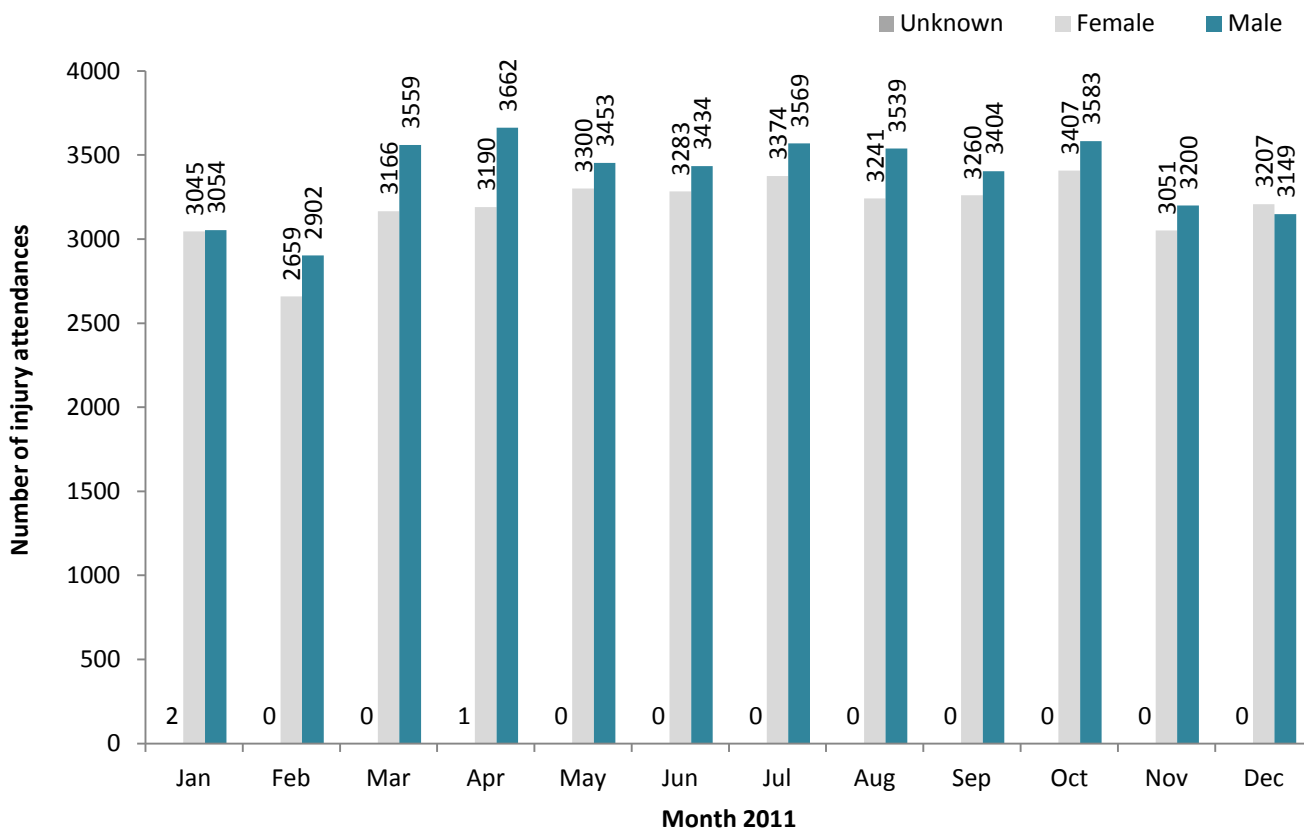
Between January and December 2011 there were 2,166 assault attendances to Blackpool Victoria Hospital ED. The month with the highest attendances was April with 222 attendances (**Figure 3**). There were more male than female assault attendances presenting at Blackpool Victoria Hospital ED (males=1,567; 72%).

**Table 5** details the age group of assault attendances for each month. The majority of ED assault attendances were aged 15-29 (n=1,206; 56%) and 37% were 30-59 years old (n=803).

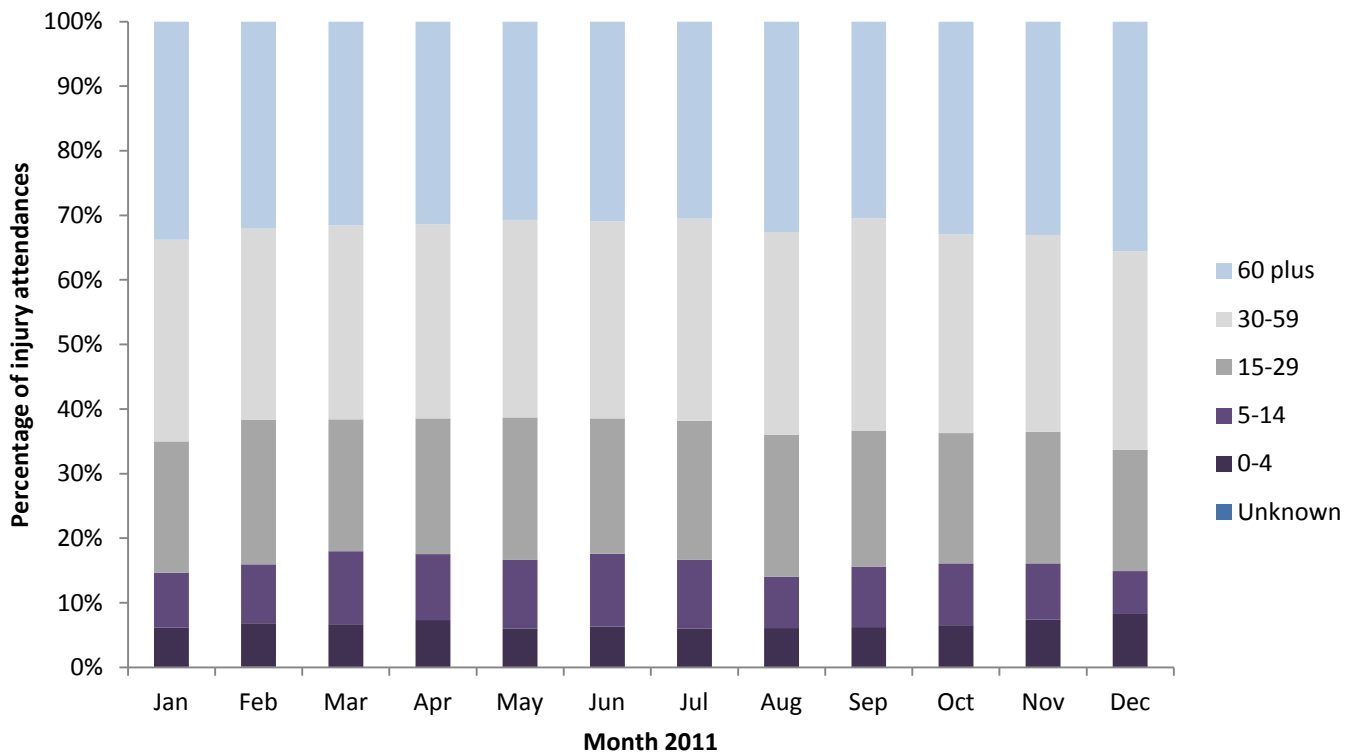
**Table 6** shows the location of incident for assault attendances. It shows just under half (47%) occurred in a public place, with over a quarter (27%) occurring in the home.

**Table 7** illustrates the discharge destination for assault attendances to Blackpool Victoria Hospital ED. Over six in ten (63%) were discharged without follow-up treatment, whilst 14% required follow-up treatment. Over one in twenty (6%) assault attendances were admitted to hospital.

**Figure 1: Gender of ED attendances by month, January to December 2011**



**Figure 2: Age group of ED attendances by month, January to December 2011**



**Table 1: ED attendances by source of referral and month, January to December 2011<sup>2,3,4</sup>**

Source of referral	Jan	Feb	Mar	Apr	May	Jun	Jul	Aug	Sep	Oct	Nov	Dec	Total	%
Self referral	2594	2368	3074	3052	3082	3044	3170	2879	2802	2819	2566	2368	33818	43
Emergency call/ambulance	2611	2407	2722	2945	2747	2857	2875	2910	2849	3113	2726	2982	33744	43
Health care provider: same or other	632	527	574	659	686	564	661	761	733	735	576	681	7789	10
GP	154	163	227	138	169	185	163	176	196	191	198	149	2109	3
Employer	50	55	53	31	26	34	37	53	39	44	32	29	483	1
Educational establishment	38	33	48	28	43	33	37	***	45	35	42	<15	397	1
Other referrer	15	6	19	***	***	***	***	***	***	15	47	54	156	0
Police	***	***	7	***	***	***	***	***	***	23	37	55	127	0
ED staff	***	***	***	***	***	***	***	***	***	<15	<25	23	66	0
LA/social services	***	***	***	***	***	***	***	***	***	***	***	***	5	0
<b>Total</b>	<b>6101</b>	<b>5561</b>	<b>6725</b>	<b>6853</b>	<b>6753</b>	<b>6717</b>	<b>6943</b>	<b>6780</b>	<b>6664</b>	<b>6990</b>	<b>6251</b>	<b>6356</b>	<b>78694</b>	<b>100</b>

**Table 2: ED attendances by injury group and month, January to December 2011<sup>5\*</sup>**

Patient group	Jan	Feb	Mar	Apr	May	Jun	Jul	Aug	Sep	Oct	Nov	Dec	Total	%
Other injury	5487	4890	5858	6072	6014	5981	6255	6080	5898	6235	5654	5771	70195	89
Sports injury	171	192	308	224	238	204	182	169	252	246	205	113	2504	3
Assault	165	173	196	222	203	179	190	198	172	185	130	153	2166	3
Overdose and poisoning	136	140	169	151	136	150	158	138	175	151	106	158	1768	2
RTC	107	134	154	137	137	162	120	162	137	139	121	126	1636	2
Deliberate self-harm	35	32	40	47	25	41	38	33	30	34	35	35	425	1
<b>Total</b>	<b>6101</b>	<b>5561</b>	<b>6725</b>	<b>6853</b>	<b>6753</b>	<b>6717</b>	<b>6943</b>	<b>6780</b>	<b>6664</b>	<b>6990</b>	<b>6251</b>	<b>6356</b>	<b>78694</b>	<b>100</b>

\* In December 2010, the overdose injury group was removed due to a change in the ED's IT system. Since this time, cases have been categorised into one of the other injury groupings (e.g. 'other injury' / 'deliberate self-harm'). Such cases are however identifiable via another data field, 'presenting complaint'. Where injury group is recorded as 'other injury' and 'presenting complaint' is recorded as overdose/poisoning these cases have been categorised in this table as overdose/poisoning. Please note, during this period, 43 DSH cases also had overdose/poisoning recorded as their presenting complaint.

**Table 3: ED attendances by location of incident and month, January to December 2011**

Location	Jan	Feb	Mar	Apr	May	Jun	Jul	Aug	Sep	Oct	Nov	Dec	Total	%
Home	4071	3492	4115	4084	3898	3861	3877	3991	3894	4093	3901	4265	47542	60
Public place	921	949	1181	1406	1319	1406	1534	1622	1335	1460	1034	924	15091	19
Other	679	687	825	990	1041	1023	1084	856	966	973	855	848	10827	14
Workplace	226	242	287	254	289	256	294	294	264	281	243	207	3137	4
Educational establishment	204	191	317	119	206	171	154	17	205	183	218	112	2097	3
<b>Total</b>	<b>6101</b>	<b>5561</b>	<b>6725</b>	<b>6853</b>	<b>6753</b>	<b>6717</b>	<b>6943</b>	<b>6780</b>	<b>6664</b>	<b>6990</b>	<b>6251</b>	<b>6356</b>	<b>78694</b>	<b>100</b>

**Table 4: ED attendances by discharge destination and month, January to December 2011<sup>6\*\*</sup>**

Discharge destination	Jan	Feb	Mar	Apr	May	Jun	Jul	Aug	Sep	Oct	Nov	Dec	Total	%
Discharged	3269	2941	3730	3851	3692	3659	3925	3715	3691	3723	3458	3301	42955	55
Admitted	1764	1628	1750	1739	1809	1762	1685	1765	1756	1991	1812	1894	21355	27
Referred	606	583	772	752	720	754	788	689	664	660	574	661	8223	10
Incomplete treatment	350	312	357	399	392	423	418	466	431	468	297	357	4670	6
Transferred	72	58	70	70	48	72	82	71	64	97	56	79	839	1
Other	20	27	29	29	69	29	22	50	32	33	27	39	406	1
Died	20	12	17	13	23	18	23	24	26	18	27	25	246	0
<b>Total</b>	<b>6101</b>	<b>5561</b>	<b>6725</b>	<b>6853</b>	<b>6753</b>	<b>6717</b>	<b>6943</b>	<b>6780</b>	<b>6664</b>	<b>6990</b>	<b>6251</b>	<b>6356</b>	<b>78694</b>	<b>100</b>

\*\*Due to a change in the ED's IT system the coding for the discharge destination field has been updated. This report uses the new coding fields in use since December 2010.

## Assaults

Figure 3: Number of ED assault attendances by gender and month, January to December 2011

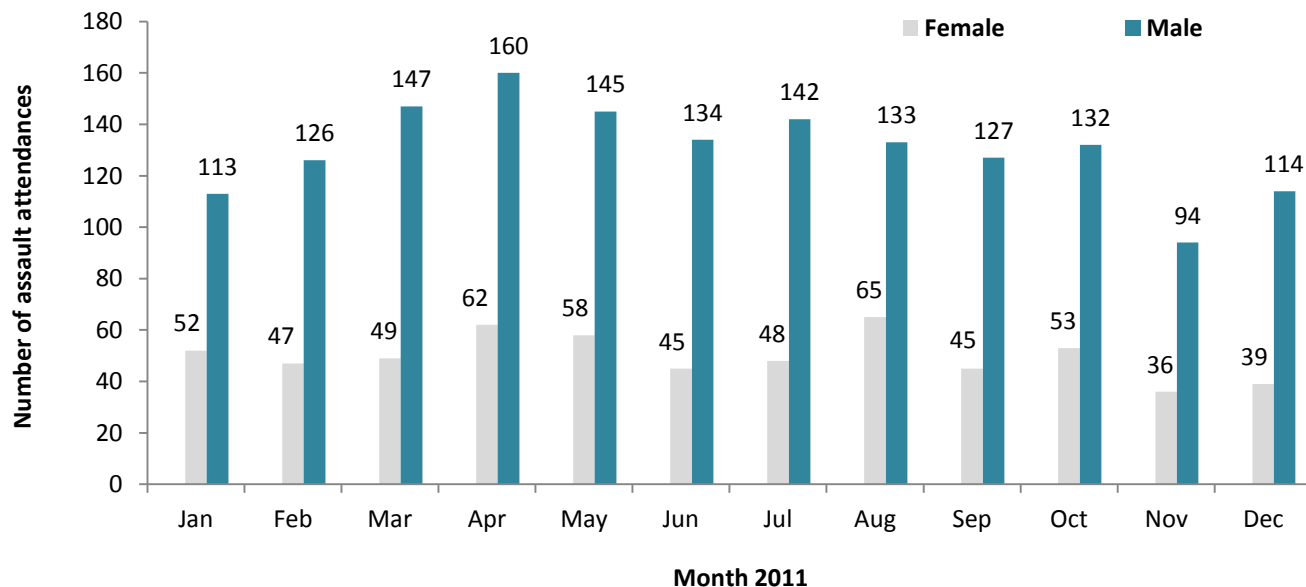


Table 5: ED assault attendances by age group and month, January to December 2011

Age group	Jan	Feb	Mar	Apr	May	Jun	Jul	Aug	Sep	Oct	Nov	Dec	Total	%
0-4	***	***	***	***	***	***	***	***	***	***	***	***	8	0
5-14	<8	6	11	8	13	14	10	8	5	10	***	***	99	5
15-29	93	101	101	125	112	111	101	113	86	104	64	95	1206	56
30-59	56	62	78	83	75	50	73	71	77	67	57	54	803	37
60 plus	9	***	<7	<7	***	***	<7	***	***	***	5	***	50	2
<b>Total</b>	<b>165</b>	<b>173</b>	<b>196</b>	<b>222</b>	<b>203</b>	<b>179</b>	<b>190</b>	<b>198</b>	<b>172</b>	<b>185</b>	<b>130</b>	<b>153</b>	<b>2166</b>	<b>100</b>

Table 6: ED assault attendances by location of incident and month, January to December 2011

Location	Jan	Feb	Mar	Apr	May	Jun	Jul	Aug	Sep	Oct	Nov	Dec	Total	%
Public place	66	80	83	103	112	72	96	95	84	92	67	77	1027	47
Home	60	44	59	56	39	40	49	56	45	57	40	42	587	27
Other	25	42	41	47	37	56	35	39	36	25	13	26	422	19
Workplace	<11	<7	<10	<14	7	***	<8	<9	<7	<10	<9	<6	92	4
Educational establishment	***	***	***	***	8	<8	***	***	***	***	***	***	38	2
<b>Total</b>	<b>165</b>	<b>173</b>	<b>196</b>	<b>222</b>	<b>203</b>	<b>179</b>	<b>190</b>	<b>198</b>	<b>172</b>	<b>185</b>	<b>130</b>	<b>153</b>	<b>2166</b>	<b>100</b>

Table 7: ED assault attendances by discharge destination and month, January to December 2011

Discharge destination	Jan	Feb	Mar	Apr	May	Jun	Jul	Aug	Sep	Oct	Nov	Dec	Total	%
Discharged	109	118	109	145	134	110	120	127	99	106	95	94	1366	63
Other	27	25	33	28	39	37	30	34	32	40	19	26	370	17
Follow-up	22	23	37	36	25	16	26	28	31	23	8	24	299	14
Admitted	7	7	17	13	5	16	14	9	10	16	8	9	131	6
<b>Total</b>	<b>165</b>	<b>173</b>	<b>196</b>	<b>222</b>	<b>203</b>	<b>179</b>	<b>190</b>	<b>198</b>	<b>172</b>	<b>185</b>	<b>130</b>	<b>153</b>	<b>2166</b>	<b>100</b>

Published February 2012  
 Johnathan Rooney (TIIG Officer)  
 Centre for Public Health, Liverpool John Moores University, 2nd Floor, Henry Cotton Campus, Liverpool, L3 2ET  
 Tel: 0151 231 4513 Email: j.rooney@ljmu.ac.uk  
 Website: [www.tiig.info](http://www.tiig.info) (please note data requests should be made through the website)

<sup>1</sup>For other EDs, TIIG reports on injuries only. However, this report includes all attendances at Blackpool Victoria Hospital ED. This is due to the medical and injury attendances being categorised within the patient group 'other'.

<sup>2</sup> GP=general practitioner, LA=local authority.

<sup>3</sup> Please note that all numbers less than five have been suppressed (with \*\*\*) in line with patient confidentiality; and if there is only one number less than five in a category then two numbers will be suppressed to prevent back calculations from totals.

<sup>4</sup> Please note percentages might not add to one hundred due to rounding.

<sup>5</sup> Due to low numbers firework injuries (n=16) have been included under other injury.

<sup>6</sup> For previous months please refer to 'January to December 2010' monthly bulletin report available at [www.tiig.info](http://www.tiig.info).